





















STORY OF S&S POWER

- 1975**  Inception of S&S Power by Sethuraman & Shanthanakrishnan based in Chennai
- 1978**  Porur factory commissioned, Started commercial production of: Pantograph type & Centre Break & Double Break Isolators for EHV systems (66KV to 400KV)
- 1981**  Vacuum circuit breaker was introduced for the first time in India (collaboration with Brush Switchgear)
- 1984**  MV SF6 manufacturing started in collaboration with Brush Switchgear
- 1986**  Porcelain clad vacuum CB for 11kV & 33kV developed and introduced
- 1989**  Introduced miniature Circuit Breaker in collaboration with AEG Germany
- 1990**  Acquisition of S&S Power by the Jalan Group
- 1995**  Setup a joint venture with Top Rank in Kuala Lumpur in Malaysia for manufacturing MV switchgear for TNB Malaysia
- 1996**  Pondicherry state of the Art Disconnecter works established, Acquisition of Acrastyle UK
- 2000**  Hived off LV & MCB business to Schneider, Hived off LV & MV fuse business to Cooper Bussmann
- 2006**  Exited joint venture in Kuala Lumpur Malaysia, Set up AIPL
- 2009**  Set up AEPS for Maglatch manufacturing & export
- 2011**  Established JV with Coelme for Disconnecter product promotion
- 2016**  Shifted the headquarters of S&S Power to the sprawling 50,000 Sq. feet integrated multi model facility in Maraimalai nagar
- 2019**  Global product range RD145G has been registered & approved by ENA(UK), SAP B1 implemented.
- 2020**  Developed 40KA indoor VCB HHV12 PRIME to service contract from MAPS
- 2021**  S&SPSE Unit-II has been set up in Maraimalai Nagar, Chennai. S&S Power became subsidiary of Hamilton Group.
- 2022**  Pondicherry unit operations transferred & colocated with Maraimalai Nagar, Chennai. New Site approved by PGCIL, NTPC.

S&S POWER PRODUCT OFFERINGS

HIGH VOLTAGE DISCONNECTOR / ISOLATOR

S&S Power offers a wide range of disconnectors ranging from 12kV to 550kV. We have supplied more than 50,000 no of disconnectors to 40+ countries World wide. Our disconnectors are designed as per IEC 62271-102 standards.

CENTRE BREAK



Rated voltage : 12 kV to 550 kV
 Rated continuous current : 400A to 4000A
 Rated short-time withstand current : 25kA to 63kA for 1sec / 3 seconds

DOUBLE BREAK



Rated voltage : 12 kV to 420 kV
 Rated continuous current : 400A to 4000A
 Rated short-time withstand current : 63kA for 1sec

PANTOGRAPH



Rated voltage : 123 kV to 550 kV
 Rated continuous current : 400A to 3150A
 Rated short-time withstand current : 50 kA r.m.s for 1 sec with 125kA peak

VERTICAL BREAK



Rated voltage : 12 kV & 72.5 kV
 Rated continuous current : 400A to 3150A
 Rated short-time withstand current : 25kA/3 sec, 31.5kA/3sec

- ### R3 SERVICES
- Retrofit
 - Refurbishment
 - Rejuvenation
 - Automation services
 - Engineering services
 - Training & assessment
 - Asset management
 - Modernization of HV substation
 - Warranty & non warranty services



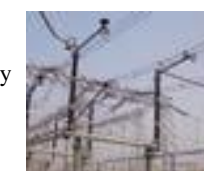
DISCONNECTOR R3 SERVICES OFFERINGS

S&S Power has developed the R3 service for high voltage disconnectors.

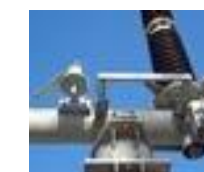
- 1) Mid life extension.
- 2) Mechanical to Electrical ganging
- 3) Motorisation of old product
- 4) Reconditioning insulator
- 5) Enabling smart drive box
- 6) Mechanical interlock enhancement
- 7) Performance rating upgrade

CONVERSION OF MECHANICAL GANG TO ELECTRICAL GANG

Mechanically ganged



Electrically ganged



MV CIRCUIT BREAKER & SWITCHGEARS

We offer a full line of Indoor switchgear & outdoor circuit breakers with voltage range up to 36kV & current range up to 2500A. We have supplied more than 20,000 nos of circuit breaker & switchgears to all major utilities in India & World wide.

OUTDOOR CIRCUIT BREAKER

OFVP12



Rated voltage : 12kV
 Normal rated current : up to 2000A
 Short circuit breaking capacity : 25kA

OFVP36



Rated voltage : 36kV
 Normal rated current : up to 2000A
 Short circuit breaking capacity : 25kA

INDOOR SWITCHGEAR

HHV12



12kV
 630A - 1600A
 31.5kA/3s

HHV36



36kV
 upto 2000A
 25kA

HHV12 PRIME



12kV
 800A - 2500A
 40kA/3s

MV SWITCHGEAR R3 SERVICES OFFERINGS

- 1) Replace AIR, OIL, SF6 by Vacuum Truck / Cassette
- 2) Upgrade panel by close door operation safety kit
- 3) Servicing of existing component in panel chambers such as CT, cable etc and vermin proofing.
- 4) Increase the current carrying capacity of busbar & VCB

40kA Breaker retrofit : We recommend to replace the existing SF6 breaker, oil breaker & air breaker with new vacuum circuit breakers in order to ensure the safe and Reliable operation of your switchgear



PROTECTION & CONTROL PANEL

Our group company APIL Designs, Manufactures and offers different types of Control, Relay and Protection panels up to 420 kV level to the esteemed customers in India and abroad

- Remote Tap Changer panel
- VCB panel
- GIS LCP
- Annunciator panel
- SAS panel
- Gateway panel
- Network panel
- Telecommunication panel
- Protection panel
- Control panel
- RTU & SER
- Protection & control panel for :
 - 1) GT
 - 2) EHV/HV
 - 3) Line
 - 4) Trap
 - 5) Busbar
 - 6) Capacitor bank



PROTECTION & CONTROL PANEL R3 SERVICES OFFERINGS

We offer to make your existing relays safe, efficient & reliable with new technical features. We offer retrofit of electromechanical to digitalrelays.

- 1) Engineering services
- 2) Protection design services
- 3) Relay commissioning and testing
- 4) Relay co-ordination
- 5) Factory automation in LV side of electricity delivery
- 6) Protection architect consultancy
- 7) Power system, Industrial & Machine automation services



S&S POWER SWITCHGEAR LIMITED

Regd. Office & Works: Plot No:14, CMDA
Industrial Area-II, Chithamanur Village,
Maraimalai Nagar 603209, Chengalpattu -
Dist, Chennai, Tamil Nadu, India
Email: sales@sspowers.com



ACRASTYLE LIMITED

North Lonsdale Road Ulverston Cumbria
LA12 9EB, United Kingdom
Tel : +44-1229-583232
Fax :+44-1229-582586

**TO VIEW OUR WEBSITE
PLEASE SCAN HERE**



**OR
PLEASE GO TO
WWW.SSPOWER.COM**

CONTACT US

MD & CEO

Mr. Ashok Vishwakarma
ashok.vishwakarma@sspowers.com
+91 95000 68533

DIRECTOR - COMMERCIAL

Mr. Sankaran R
rs@sspowers.com
+91 73059 92432

DISCONNECTOR PRODUCTS

Mr. Kumaresh
srk@sspowers.com
+91 93818 69200

SENIOR MANAGER MARKETING

Mr. Sathish Paul
sathish.paul@sspowers.com
+91 73977 95302

DISCONNECTOR R3 SERVICE PROJECT LEADER

Mr. Madhanagopal
mgl@sspowers.com
+91 87545 81148

SPECIALIST IN POWER SWITCHING & PROTECTION PRODUCTS & SERVICES