

INTRODUCTION

S&S Power is the first company to introduce Outdoor Porcelain Clad Vacuum Circuit Breaker. With further innovative skills S&S Power made this Circuit Breaker meet highly demanding needs for performance from all quarters like Consultants, Contractors, Industries and Utilities

Today more than 20,000 nos of S&S Power Circuit Breakers are in operation worldwide. Outdoor Vacuum Circuit Breaker for 36 kV type OFVp36 is the most reliable and cost effective solution for distribution at 36kV. Our Circuit breakers are fully Type tested in the International testing laboratory of CESI, Italy to the relevant IEC specifications and caters for all climatic conditions.



OUTDOOR VACUUM CIRCUIT BREAKER

OFVp36
36 kV, 2000A, 25kA

TECHNICAL DETAILS

Standard Applicable	IEC 62271-100
Type & designation	OFVp36
Normal Voltage	22/33kV
Rated Voltage	24/36kV
Frequency	50Hz
Normal rated current	upto 2000A
Short circuit breaking capacity	upto 25kA
Withstand voltage	50/75kV rms
Rated impulse withstand voltage	125/170kVpeak
Nominal creepage of bushings	
Support	910mm
Interrupter housing	910mm
Duty cycle-full breaking capacity	
Normal	O – 3 MIN – CO – 3 MIN – CO
Auto reclose	O – 0.3 SEC – CO – 3MIN - CO

★ SPECIAL FEATURES

- Low energy mechanism
- Light weight construction
- Simple assembly
- Ease of erection
- Protection against hazardous environments
- Few moving mechanical components
- Shock free performance
- Reduced & Simplified foundation

👍 APPLICATIONS

- Transformer switching
- Protection against short circuit
- Capacitor bank switching
- Cable switching
- Load transfer
- High speed auto reclosing

⊕ BENEFITS

- Easy installation & operation
- Less maintenance
- Modern vacuum interruption technology
- Robust construction
- Reliable conception makes it for long time service

THE CIRCUIT BREAKER

Each phase of the three phase circuit breaker is self contained in a porcelain bushing, which houses the Vacuum Interrupter. This also contains incoming and outgoing terminal connections at the top and bottom of the bushing. This porcelain bushing is supported by another porcelain bushing which contains the drive rod for the interrupter. All associated live parts within the vacuum interrupter housing bushing are surrounded by favorable climate. Simultaneously the porcelain bushing is fully sealed to protect the interrupter from adverse weather and polluted environments. The creepage of the interrupter surface being fixed, the porcelain protection ensure that the Circuit Breaker operates in atmosphere of varying degrees of degrees of pollution from saline atmosphere, flue, gasses, dust etc.



VACUUM INTERRUPTER



OFVp-36 employs Vacuum as an arc extinguishing medium for arc interruption. Vacuum Interrupters are procured from the most renowned and best quality manufacturers of the world. The interrupters are capable of interrupting over 100 full short-circuit operations at normal current 20,000. Special characteristics of the Vacuum Interrupters are very low arcing time and quick recovery of dielectric strength across the contact gap. The contact gap required is also very small and accordingly calls for low energy drive for its operation. The unquestionable quality of these Interrupters is guaranteed for five years of trouble free service in any environmental conditions. The moving electrodes of the interrupter are driven by a spring operated mechanism through integrated drive arrangement.

OPERATING MECHANISM-M37



M37 Mechanism is designed for operation of very short stroke required in Vacuum Interrupter and is normally charged by motor but as a standby, manual charging facility is also provided for the operation in case of necessity. When charged, the closing spring is held by a latch which can be released either by manual means or by a solenoid to close the circuit breaker. Where motor charging is provided, the spring gets automatically recharged immediately after a closing operation. The mechanism is retained in the "ON" position (circuit breaker closed) by an over toggle linkage. The energy required for opening is provided by the springs, incorporated in the drive assembly which is compressed during the closing stroke.

Mechanism Cabinet

- Rust free enclosure
- Breaker On/Off
- Springs charged or discharged
- Operation counter
- IP55 Standards
- Local on/off switch
- Local/remote switch
- Anti pumping relay
- All necessary fuses and wiring

Instrument Transformer

Current transformer and potential transformer suitable for outdoor application can be provided with Integrated support structure as package wherever required

Control Panel

Indoor or Outdoor type Control and Relay panels housing the meter, relays, switches, etc suitable for structure mounting on to the VCB structure or for separate plinth mounting can be provided along with the Vacuum Circuit OFVp-36 is capable of switching circuits for the following applications.

Special Application

In addition to transformer and feeder switching where outdoor vacuum circuit breaker are widely used. OFVp-36 is capable of switching circuits for the following applications

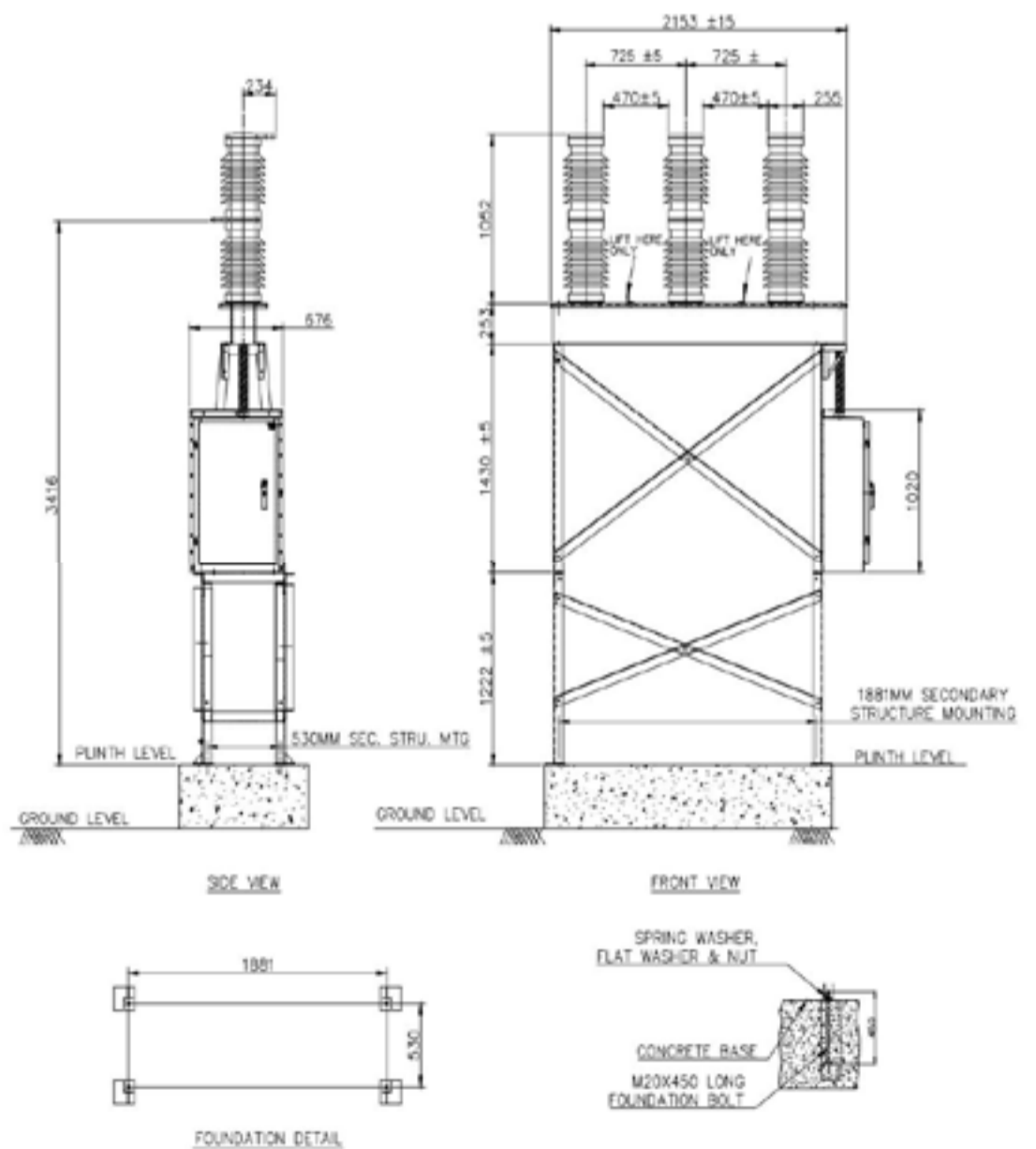
Capacitor Switching

The circuit breaker is ideally suited for capacitor switching upto 5 MVAR rating

Furnace Switching

OFVp-36 type Outdoor Vacuum Circuit Breaker is suitable for switching of arc furnace transformers upto 50 operations perday

General Arrangement of OFVp-36



S&S POWER SWITCHGEAR LIMITED
Regd. Office & Works: Plot No:14, CMDA
Industrial Area-II, Chithamanur Village,
Maraimalai Nagar-603209, Chengalpattu -Dist,
Tamil Nadu, India



Mr. Kumeresh (SAARC & ASEAN) - +91 93818 69200
Mr. Manikandan K (Middle East Europe & Africa) - +91 73583 06505
Mr. Sathish Paul (Products & Services India) - +91 73977 95302
Mr. Swamy (OEM & Contract Manufacturing) - +91 93815 17697



sales@sspower.com



www.sspower.com