

Retrofitting of Disconnectors at THE WEST BENGAL POWER DEVELOPMENT CORPORATION LIMITED, BAKRESHWAR

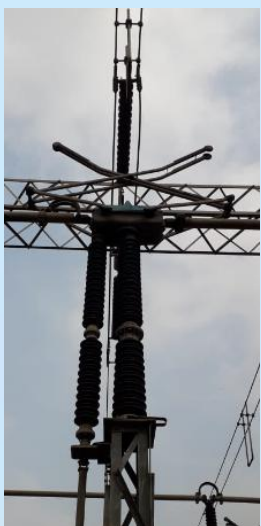
Client : THE WEST BENGAL POWER DEVELOPMENT CORPORATION LIMITED

Location : BAKRESHWAR THERMAL POWER STATION

Product: 245kV Pantograph & 245kV Centre Break Disconnecter



Before Retrofitting...



ELPRO Make Disconnectors

Effects of Retrofitting...

Issues identified at site

- Contacts parts are damaged and Non operating
- Hot spots in current carrying parts
- Drive boxes were not in operating condition



Challenges

- Disconnector fixing Without change in existing structure and insulator
- Complete set of isolator Matching the structure and Terminal connector height
- Matching the Drive box fixing position as per structure suitability

Solution provided

- Complete set of isolator replacement along with Drive box
- RP 245kV and RC 245kV Disconnectors with Existing structure mounting dimensions

After Retrofitting...



Quick turn around time

RP 245kV – 63 Poles & RC 245kV – 18 Poles along with along with Drive box supplied and yet to be Erected & commissioned.

Please Contact for support....

Technical

: Mr. E.Madhana Gopal
mgl@sspower.com

Mob:+91-8754581148

Commercial

: Mr. S.R.Kumaresh
srk@sspower.com

Mob:+91-9381869200