

S&S Group - Product Offerings

Product Categories

Disconnectors



Circuit Breakers



Control & Relay Panels



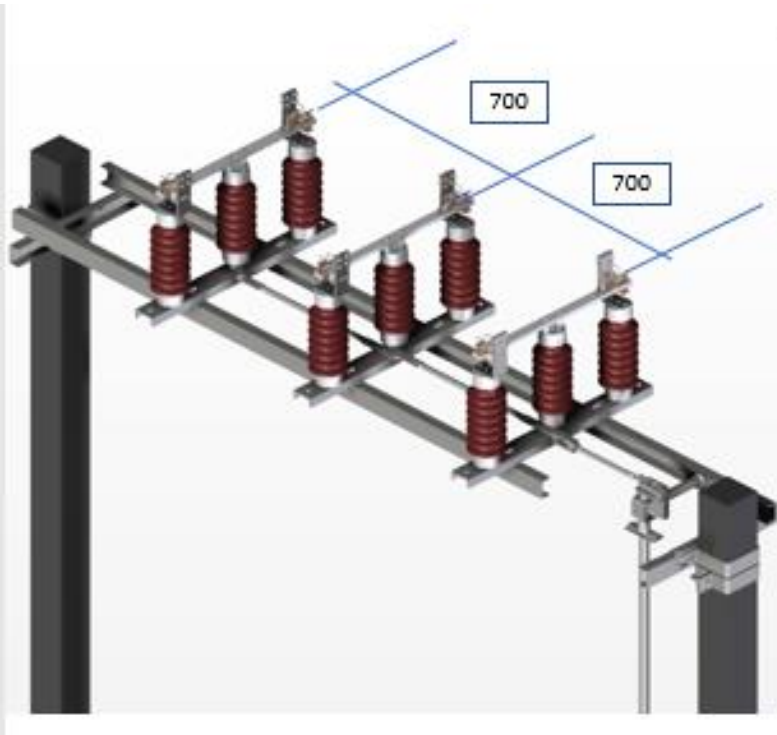
Disconnectors

- **Type Double break -RD/Centre break -CB/pantograph type-RP**
- **36kV to 420kV for AC and up to 110kV for DC voltages**
- **Current from 400A ~4000A**
- **With main conductors material design as Aluminium / copper**

RD 36kV solution for CEB Ceylon Sri Lanka

Disconnectors

RD36kV double break
disconnecter



Key specifications

- 36kV , 400A
- 16kA/1s
- 25mm/kV creepage
- Without Earth switch
- Manual operating mechanism

Salient Features

- Low pole distance 700mm
- 9m High DoP
- With Arcing contact
- Specialty designed structure

RD 36kV range extension to 2500A for BREB

Disconnectors

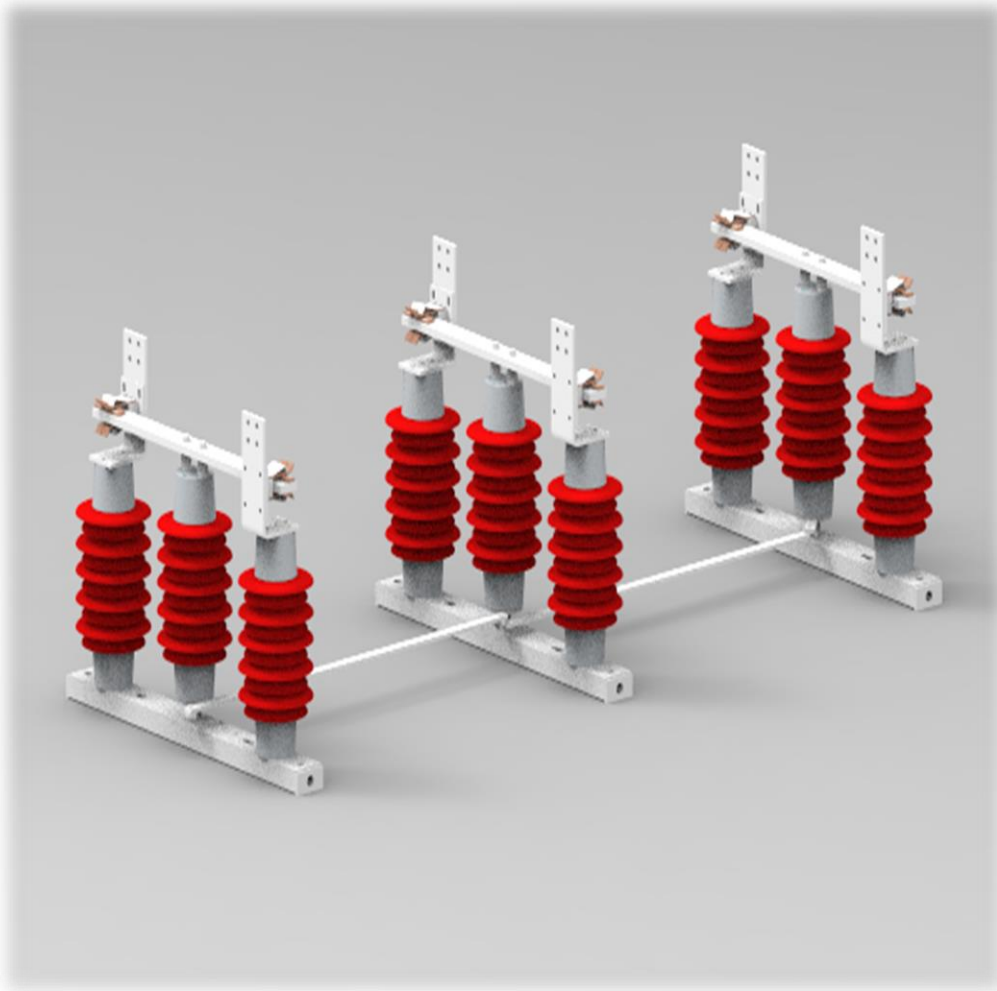
RD36kV double break
disconnecter

Key specifications

- 36kV ,1250A/ 2500A
- 31.5kA/3s
- 25mm/kv creepage
- Manual operating mechanism

Salient Features

- High current rating 2500A
- STC value 31.5kA/3s tested
- Low contact resistance
<30micro ohms per contact



Mechanically ganged Pantograph 123kV for Phugnia Vietnam

Disconnectors

- 3 pole Pantograph



Key specifications

- RP123kV , 1250A
Panto graph type disconnector
- Tandem layout
- Motorized/Manual drive with gearbox

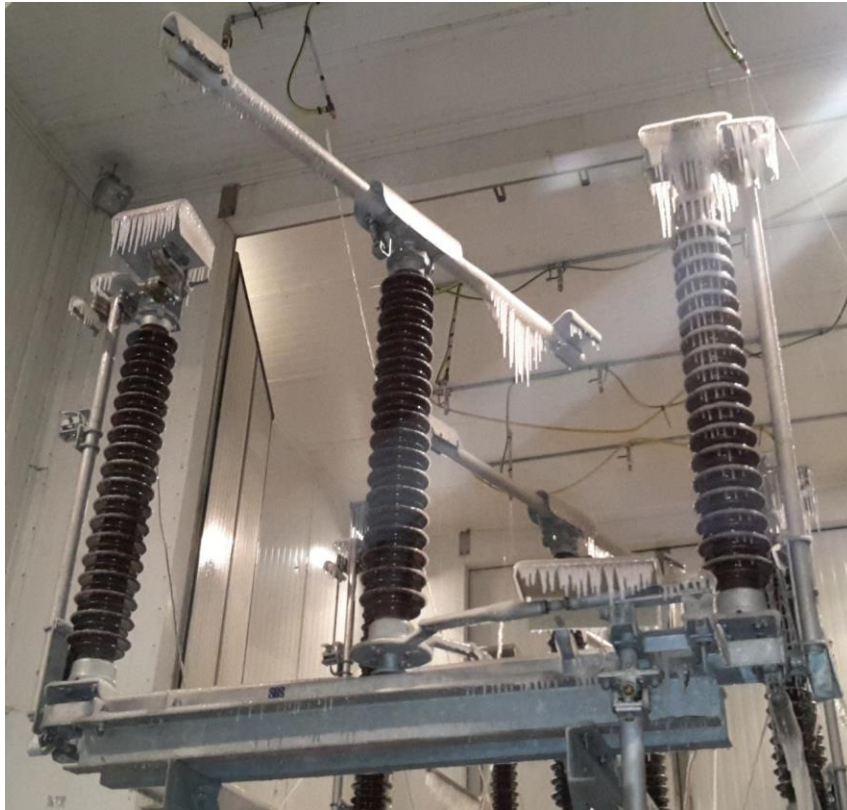
Salient Features

- Mechanically ganged with one drive box for all 3 poles
- Adjustable height fixed contacts

RD145G Double break disconnecter for UK market Global range

Disconnectors

- Disconnector 145kV RD



Operation test with ice loading

Key specifications

- 145kV , 2000A
- STC 40kA/3sec
- With double earth switch
- With motorised gearbox mechanism

Salient Features

- Electrically ganged
- With Ice loading capability
- Optional induced current contacts
- Optional Arcing contact
- Optional bus transfer contacts
- For ENA compliance/ approval

- 245kV Double break switch



Key specifications

- 245kV , 2000A
- STC rating 40kA/3sec
- 31mm/kV Creepage
- **For Pollution Degree IV**

Salient Features

- **Silicone RTV coated insulators**
- 2650mm height of insulators
- Special height of Earth switch contact
- Eskom compliance/approval South Africa market

RD245kV Double break Disconnecter for higher Altitude for Waghoora

Disconnectors

- 245kV Double break switch



Key specifications

- 245kV , 1600A
- STC rating 40kA/1sec
- With Single earth switch

Salient Features

- **For higher altitude 1600m**
- **Snow shield provision**
- For ambient -15deg to 50deg

RD420 double break with 63kA/1sec

- 3 pole RD type disconnector switch



**DOUBLE BREAK DISCONNECTOR
(TYPE: RD 420kV)**

Key specifications

- RD420kV with 2500A
- Electrically ganged
- With Earth switch

Salient Features

- Higher STC 63kA/1sec
- Slim design

Circuit Breakers and Panels
up to 12kV and 36kV

HHV12 panel Truck with IDAM 2 mechanism

Circuit Breakers



- Key specifications
- 12kv /2000A

- Salient Features
- Compact design
- M2 mechanism life

- **HHV 12 Panel with IDAM2**

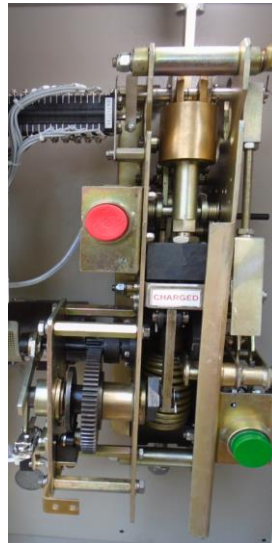


HHV12 panel Truck with M37 mechanism

Circuit Breakers



- **HHV 12 Panel with M37**



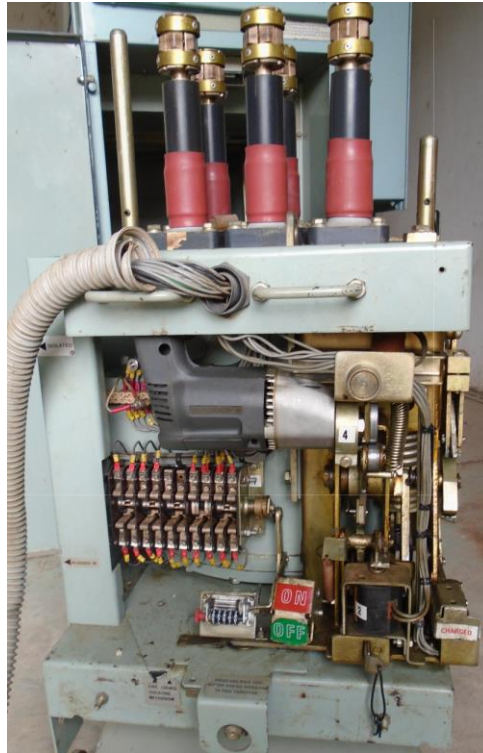
- Key specifications
- 12kv /2000A
- Salient Features
- Proven strong design
- M1 mechanism life

VHV12 panel with Truck



- **VHV 12 Panel and Truck**

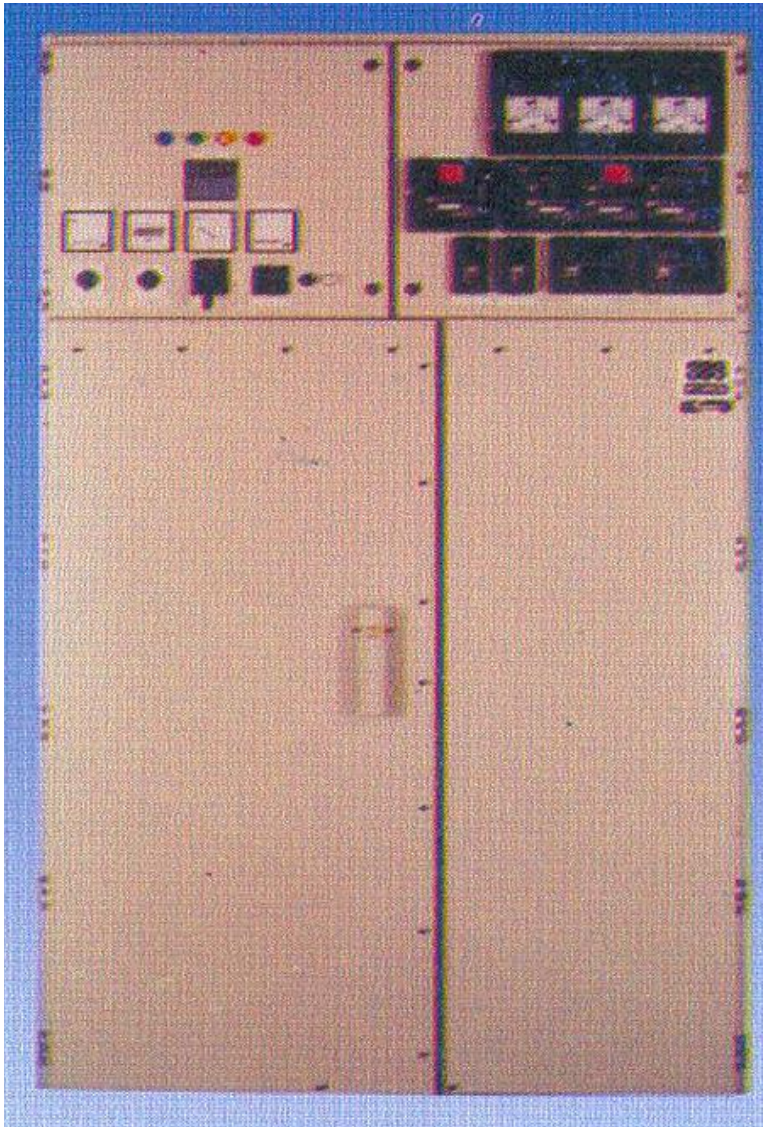
Circuit Breakers



- Key specifications
- 12kv /2000A

Salient Features

- Suitable for vertical contact design
- M1 mechanism life



Key specifications

- 36kV /2000A
- 50/60Hz
- STC 25kA
- Impulse withstand voltage 170kV
- Power frequency 70kV

Salient Features

- Suitable for horizontal contact alignment
- M1 mechanism life
- M37 Mechanism

Retrofitting VCB up to 12kV

Circuit Breakers



RETROFITTING – VCB in MOCB PANEL WITH TRUCK



OFVP12 Outdoor VCB

Circuit Breakers



Key specifications

- Up to 12kV
- STC 20kA/1sec
- Current to 2000A

Salient Features

- Front operated
- Compact design
- Type tested
- Proven M41 mechanism
- Proven BEL make bottles

OFVp12 (OUTDOOR) FRONT
OPERATOR MECHANISM

OFVP36 Outdoor VCB

Circuit Breakers



Key specifications

- Up to 36kV operating
- STC 26.2kA/1sec
- Current upto 2000A

Salient Features

- Front operated –compact design
- Proven M37 mechanism
- Proven BEL make bottles with creepage rings
- High electrical life 20,000 opns

OFVp36 (OUTDOOR) FRONT
OPERATOR MECHANISM

Kiosk type 12kV Outdoor Type



Circuit Breakers

- **Key specifications**
- **Uo to 12kV operating voltage**
- **20kA/1sec STC**
- **Salient Features**
- **IP55 Enclosure**

RVAC (SF6) RMU



Circuit Breakers Panels

Key specifications

- Rated voltage up to 12kV
- Rated current up to 630A
- STC 20kA/4sec
- As per IEC standards

Salient Features

- Proven reliable design
- SF6 based insulation
- Compact design

VS1 Indoor VCB



Circuit Breakers & Panels

Key specifications

- Rated voltage up to 12kV
- Rated current up to 400A/ 630A
- STC 20kA/4sec
- Electrical endurance E2
- Mechanical endurance M2 /20000 operations

Salient Features

- Proven reliable design
- Unique CuCr contact for better life and low chopping current
- Compact design

Control and Relay Panels

Control Relay Panels

CRP system from 11kV to 220kV with SAS facility



Key specifications

- 11kV to 220kV
- For line/ feeders /transformers/generators/busbar protection
- Various Bus arrangement (Single/double with or without transfer bus/one and half breakers system with/without BCU)
- Relays of GE/Siemenns/Schneider/Toshiba/ABB etc

Salient Features

- IP54 enclosures/Dead front/simplex/duplex
- Modular construction

Recent Projects : Toshiba Panel for OPTCL project

Solkar panel for UK project

Local Control Cabinet (LCC) for GIS up to 765kV



Control Relay Panels

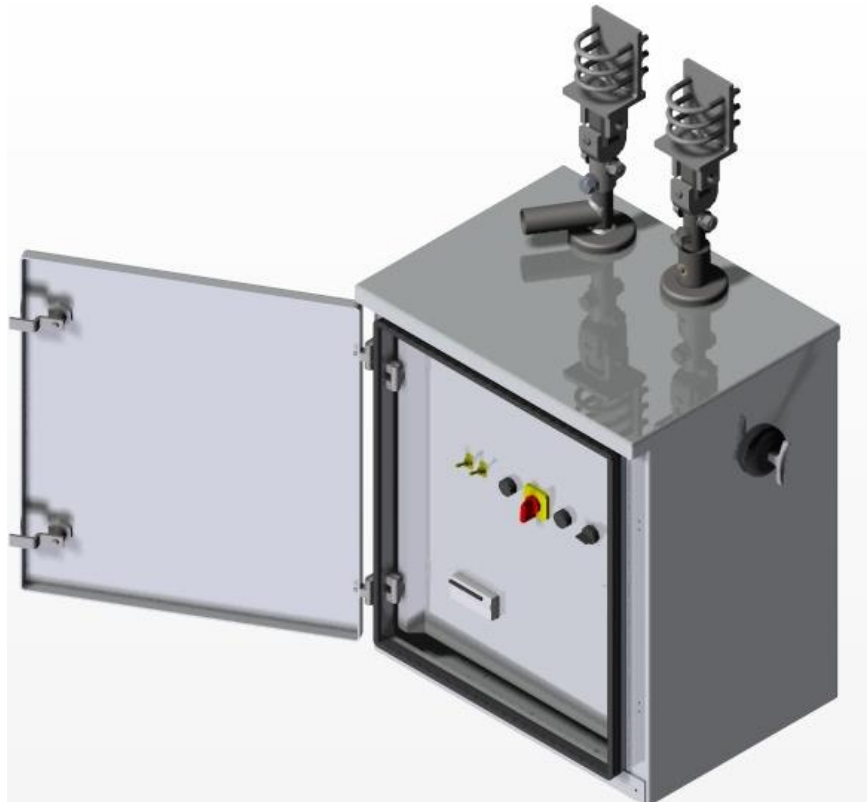
Key specifications

- Control of Breakers (GIS in AISS)
- For 145kv~765kV rating of GIS breakers
- Ganged pole and individual pole operations
- Cabinet of Aluminium(bare/painted) or MS (Painted)

Salient Features

- Compact design
- Ip55 enclosure

Drive box for Disconnectors (36kV to 420kV)



Control Relay Panels

Key specifications

- Output torque up to >85kgm
- Operating angle 90~180deg
- Rated control voltage 30/110/120/220/250 VDC
- With anti condensation heaters in box

Salient Features

- With interlock facility between isolator and earth switch
- Ip55 enclosure
- With Aluminium/MS boxes with paint/bare design for Aluminium

Battery charger Panel



Battery Charger Panels

Key specifications

- AC Input 415 V /50/60 Hz
- Output Current from 5A~3000A
- Voltage system DC
24/48/110/125/220/360 V
- Battery type Lead acid/Ni CD
- As per IS4540/ IEC 146

Salient Features

- Overload and short circuit protection
- 6 pulse/12pulse/24pulse charger design
- High Efficiency 80~93%
- RS485 interface for remote control
- Ip20/31/42 enclosure

LV switchgear Panel



Switch Gear Panels

Key specifications

- Current from 400A~4000A
- Copper/Aluminium busbars
- Modular Design
Draw out type/Fixed

Salient Features

- Compact design
- Ip53 enclosure

Thank You